

## User Guide to Lab Computers and Wi-Fi

Dear CUPUM participants, we are glad to let you know that you are able to use the computers in a HKU lab and access broadband Wi-Fi with laptops or other wireless mobile devices on the conference venue.

### Lab Computer Use:

1. **Room 201 in Run Run Shaw Building** is reserved for CUPUM conference participants during the conference. All 25 desktop computers in this room are open to CUPUM registered participants with first come first serve principle. Participants can take one computer and use for 1 hour if there is someone is waiting. If all the computers are occupied, please wait outside for the next available one because the room is very small. There will be a student helper in the lab to assist you.

#### **The open hours of the lab:**

9:00 - 12:00 & 13:30 - 17:30, June 16, 2009

9:00 - 12:00 & 13:30 - 17:30, June 17, 2009

9:00 - 12:00, June 18, 2009

2. The login account and password is:

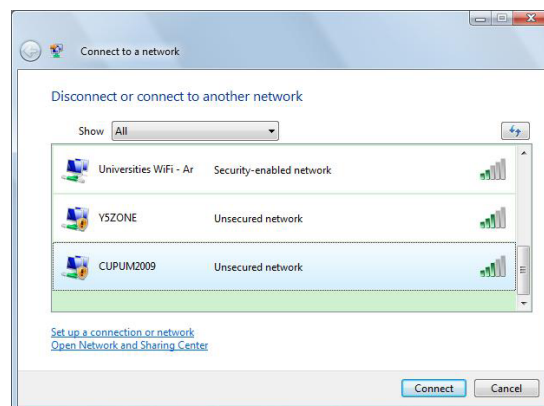
**Account:** cupum09

**Password:** cupumhku

Please keep the account and password to yourself and do not change the password in any event.

### Wi-Fi Use

1. Make sure that your laptop wireless reception is turned on.
2. Search for available WLAN. Open “Start” — “Control Panel” — “Network Connections”. Right click on “Wireless Network Connection”, open “View Available Wireless Networks”, click on “Refresh network list” on the left. (for Windows XP)
3. Connect to Wi-Fi. Choose the SSID: **CUPUM2009** (only in Rayson Huang Theatre) or **CC WLAN** (On campus including conference venue) and click on “Connect”. Wait for a moment until it shows “Connected” which means the Wi-Fi is successfully connected.



4. The Wi-Fi service is only available around the conference avenue.

**If you have any question, please contact any conference staff.**